



ICOn-LBG 2016

**The Third International
Conference on Law,
Business and Governance**

PROCEEDINGS

Hosted by
Faculty of Law, Faculty of Economics and Faculty of Social Science
Bandar Lampung University (UBL)

Icon-LBG 2016

THE THIRD INTERNATIONAL CONFERENCE
ON LAW, BUSINESS AND GOVERNANCE 2016

20, 21 May 2016
Bandar Lampung University (UBL)
Lampung, Indonesia

PROCEEDINGS

Organized by:



Faculty of Law, Faculty of Economics and Faculty of Social Science
Bandar Lampung University (UBL)
Jl. Zainal Abidin Pagar Alam No.89 Labuhan Ratu, Bandar Lampung, Indonesia
Phone: +62 721 36 666 25, Fax: +62 721 701 467
website :www.ubl.ac.id

PREFACE

The Activities of the International Conference are in line and very appropriate with the vision and mission of Bandar Lampung University (UBL) to promote training and education as well as research in these areas.

On behalf of the Third International Conference on Law, Business and Governance (3th Icon-LBG 2016) organizing committee, we are very pleased with the very good response especially from the keynote speaker and from the participants. It is noteworthy to point out that about 46 technical papers were received for this conference.

The participants of the conference come from many well known universities, among others : International Islamic University Malaysia, Unika ATMA JAYA, Shinawatra University, Universitas Sebelas Maret, Universitas Timbul Nusantara, Universitas Pelita Harapan, Universitas Bandar Lampung, Universitas Lampung.

I would like to express my deepest gratitude to the International Advisory Board members, sponsor and also to all keynote speakers and all participants. I am also grateful to all organizing committee and all of the reviewers who contribute to the high standard of the conference. Also I would like to express my deepest gratitude to the Rector of Bandar Lampung University (UBL) who give us endless support to these activities, so that the conference can be administrated on time

Bandar Lampung, 21 May 2016

Mustofa Usman, Ph.D
Icon-LBG Chairman

PROCEEDINGS

Icon-LBG 2016

**The Third International Conference
on Law, Business and Governance**

20,21 May 2016

INTERNATIONAL ADVISORY BOARD

M. Yusuf S. Barusman, Indonesia
Andala R.P. Barusman, Indonesia
Mustofa Usman, Indonesia
Hayyan Ul Haq, Netherland
Renee Speijcken, Netherland
Zulfi Diane Zaini, Indonesia
Agus Wahyudi, Indonesia
Harpain, Indonesia
Khomsahrial Romli, Indonesia
Ida Farida, Indonesia
Warsono, Indonesia
Andreas Budihardjo, Indonesia
Pawito, Indonesia
I Gusti Ayu Ketut Rahmi, Indonesia
Lintje Anna Marpaung Indonesia
Zainab, Indonesia
Nik Ahmad Kamal Nik Mahmood, Malaysia
Maliah Sulaiman, Malaysia
Mohanraj, India
Wahyu Sasongko, Indonesia
Ari Darmastuti, Indonesia

PROCEEDINGS

Icon-LBG 2016

**The Third International Conference
on Law, Business and Governance**

20,21 May 2016

STEERING COMMITTEE

Executive Advisors

Dr. Ir. M Yusuf S. Barusman, MBA
Dr. Hery Riyanto, M.T.
Dr. Lintje Anna Marpaun, SH., MH.
Drs. Thontowie, MS

Chairman

Dr. Andala Rama Putra Barusman, SE., MA.Ec.

Co-Chairman

Dr. Bambang Hartono, S.H., M.Hum.
Dr. Yadi Lustiadi, M.Si.

Secretary

Hanindyalaila Pienresmi, S.I.Kom., M.I.Kom.

Technical Committee of Law Division

Dr. I Gusti Ayu Ketut Rachmi Handayani, SH., MH
Dr. Erina Pane, SH., MH
Dr. Bambang Hartono, S.H., M.Hum.
Dr. Zulfi Diane Zaini, SH.,MH
Dr. Zainab Ompu Jainah, SH., MH
Dr. Tami Rusli, SH., M.Hum.
Erlina B, SH.,M.Hum

Technical Committee of Economics, Business and Management Division

Prof. Dr. Sudarsono
Dr. Andala Rama Putra Barusman, SE., MA.Ec.
Dr. Lindrianasari, S.E., M.Si., Akt, CA
Dr. Angrita Denziana, SE., Akt,MM, Ak. CA
Dr. Iskandar Ali Alam, MM.
Tina Miniawati, SE., MBA.

Dra. Rosmiati Tarmizi, MM, Ak.
Afrizal Nilwan, SE,, M.Ec., Akt.

Technical Committee of Social Sciences Division

Prof. Dr. Khomsahrial Romli, M.Si.
Dr. Yadi Lustiadi, M.Si.
Dr. Supriyanto, M.Si.
Dr. Ahmad Suharyo, M.Si.
Dr. Wawan Hernawan, M.Pd.
Dr. Dra. Ida Farida, M.Si.
Dr. Malik, M.Si.

PROCEEDINGS

Icon-LBG 2016

**The Third International Conference
on Law, Business and Governance**

20,21 May 2016

ORGANIZING COMMITTEE

Chair Person

Dr. Iskandar Ali Alam, MM.

Secretary

Tya Rizna Pratiwi, S.E., M.S.Ak

Treasure

Samsul Bahri, S.E.

Administration

Proceedings and Certificate Distribution

Dina Ika Wahyuningsih, S.Kom

Tri Nuryati, S.Kom

Vida Yunia Cancer, S.A.N.

Agung Saputra

Desi Anggraini, SE.

Recca Ayu Hapsari, S.H., M.H.

Nurdiawansyah, S.E.

Sponsorship

Ir. Indriati A. Gultom, MM.

Yulia Hesti, SH., MH.

Bery Salatar, S.Pd

Receptionist and Registration

Rifandy Ritonga, SH., MH.

Ade Nur Istiani, S.I.Kom., M.I.Kom

Haninun, SE., MS., Ak.

Hepiana Patmarina, SE., MM.

Tya Rizna Pratiwi, S.E., M.S.Ak

Selfia Alke Mega, S.T., MM.

Revita Sari, S.E. MA.

Tri Lestira Putri Warganegara. S.E., M.M.

Transportation and Accommodation

Irawati, SE
Zainal Abidin, SE.
Desi Puspitasari, SH.

Documentation

Noning Verawati, S.Sos
UBL Production

Special Events

Khairudin, SE., M.S.Ak
Aminah, SE., M.S.Ak
Olivia Tjioer, SE., MM.
Drs. Suwandi, M.M.
Dra. Azima Dimiyati, M.M.
Drs. Soewito, M.M.
Dra. Agustuti Handayani, M.M.
Risti Dwi Ramasari, S.H., M.H.
Siti Rahmawati, SE.
Arnes Yuli Vandika, S.Kom., M.Kom
Melissa Safitri, S.H., H.H.
Selvi Diana Meilinda, S.A.N., M.P.A.
Syahril Daud, S.P., M.Si.

Consumption

Dra. Yulfriwini, M.T.
Susilowati, S.T., M.T

IDENTIFYING CRIMINALITOR USING FACE DETECTION ON ROOM SECURITY SYSTEM

Robby Yuli Endra^{1*}, Ade Kurniawan^{1**}, Ari Kurniawan Saputra^{1***}
¹Computer Science Faculty, Bandar Lampung University, Indonesia

*Corresponding email: robby.yuliendra@ubl.ac.id

**Corresponding email:ade.curniawan@gmail.com

***Corresponding email: ari.curnia.one@gmail.com

Abstract

Security is a State where free from danger. because with good security, everyone will feel comfortable and serene setting, so that it became one of the priorities that take precedence. In this research, we will discuss about the facial image recognition systems using Histogram of Oriented Gradient is applied to the face detection system to identify the perpetrators of the crimes. Histogram Of Oriented Gradients is one of the algorithms used to extract object features in the image using the human object, its application in this research is used to detect any pattern of the face. The existence of this system is expected to help law enforcement authorities to identify the perpetrators of crime, face can then be caught in the end the number of crime cases is reduced.

Keywords:HOG, SVM, detection, Face Detection.

1. INTRODUCTION

Security is a State where free from danger. because with good security, everyone will feel comfortable and serene setting, so that it became one of the priorities that take precedence.

Along with the changing times that intensified, there is a new way to support security. One of its applications is in artificial intelligence (Artificial Intelligence) with the introduction of the image of the face so that only people who are indeed entitled to who can use it. With a facial recognition system, then law enforcement authorities will be greatly helped and can recognize and acquire data from thousands of faces. This system using facial image recognition technology to identify a person's face.

Facial image recognition is a process to recognize and identify a person's face. Facial image recognition technology included in the biometric that uses human characteristics. By using image recognition technology face, we can obtain data that is precise, accurate, and to improve the efficiency of time and human resources because this technology can be monitored in places that are considered very important to do monitoring such as banks, shopping centers and other places with maximum time (1x24jam). (Kurniawan. A, 2016)

Rampant crime cases that occurred in the increasingly troubling the public, the perpetrators are not hesitate hurt everyone who they consider to be a threat to them, making law enforcement authorities must conduct stringent safeguards Extras, but the ability of the perpetrator of the crime that is meticulous in outwit security system makes law enforcement authorities the difficulties to find and recognize the identity of the perpetrators. This is because of the lack of a good security system and continuous improvement.

In this research, we will discuss about the facial image recognition systems using Histogram of oriented gradients are applied on face detection system to identify the perpetrators of the crimes. The existence of this system is expected to help law enforcement authorities to identify the faces of the perpetrators of crime, then happens can get caught in the end the number of crime cases is reduced.

2. METHOD

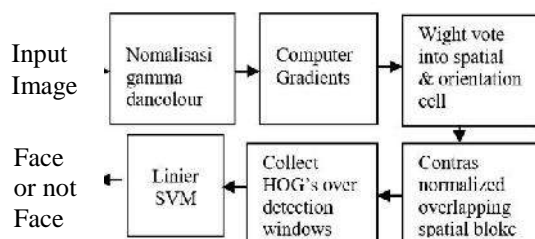
Histogram Of Oriented Gradients is one of the algorithms used to extract object features in the image using the human object. Based on his pace early in the process, the method converts the RGB image is HOG (Red, Green, Blue) into grayscale, which is then followed by calculating the gradient of each pixel. After getting the value of the gradient, then the process next determines the number of orientations that will bin used in making a histogram. This process is called spatial orientation binning. But earlier in the process to compute the gradient of the image training is divided into multiple cell and are grouped into larger size is called a block. While in the process of normalization of block geometry calculations used R-HOG. This process is done because there is a block that overlap. In contrast to the process of making an image histogram using value – the value of the intensity of the pixels of an image or a certain part of the image for the manufacture of histogramnya. (Dalal, N. Triggs, B, 2005)

1. Emgu CV

EmguCV play a role to bridge C # and OpenCV, EmguCV is wrapper.Net to OpenCV. With EmguCV, in OpenCV functions can be invoked through the programming language that is compatible with the net such as C #, VN, VC ++ and. The advantage of using EmguCV the most important is the library is completely written in C #, which is certainly more secure since the creation of the object or reference to be managed by the garbage collector. EmguCV has two layers, namely the basic layer and a second layer. Basic layer contains the function, structure, and enumeration that directly reflect what is on the OpenCV. It is this layer with the functions on the OpenCV can be invoked with the C # programming language. While the second layer contains classes that make use of advantages of the technology.The net.Inside. (<http://library.binus.ac.id/eColls/eThesisdoc/Bab2/2012-1-00535-mtif%202.pdf>).

2. HOG Detection

Histogram Of Oriented Gradients are used to extract object features in the image using the human object. Based on his pace early in the process, the method converts the RGB image is HOG (Red, Green, Blue) into grayscale, which is then followed by calculating the gradient of each pixel. After getting the value of the gradient, then the process next determines the number of orientations that will bin used in making a histogram. This process is called spatial orientation binning. But earlier in the process to compute the gradient of the image training is divided into multiple cell and are grouped into larger size is called a block. While in the process of normalization of block geometry calculations used R-HOG. This process is done because there is a block that overlap. In contrast to the process of making an image histogram using value – the value of the intensity of the pixels of an image or a certain part of the image for the manufacture of histogramnya, these are the stages in the Histogram Of Oriented Gradient .(Dalal, N. Triggs, B, 2005)



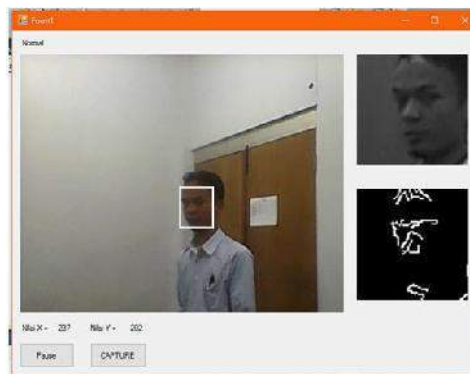
Picture 1. The Groove face detection

3. Normalize gamma and color

On the conversion of an image into grayscale can be done by taking all of the pixels in the picture then color each pixel would have taken information about 3 basic colors, namely red, blue and green (via the function RGB color), the three basic color it will be aggregated and then shared three so that the average value obtained. This average value will be used to give color to the image pixels so that color to grayscale, the three basic colors of a pixel will be set to be the value of the average (through the RGB function), to get the value of grayscale can be found with the following conditions:

1. The position of the Object in an oblique

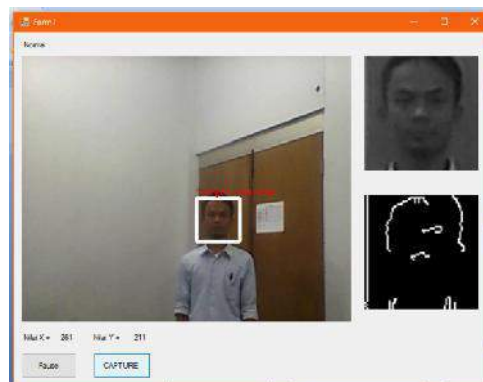
This test is done to find out the influence of the variation of the rotation of the position of the face against the accuracy and speed of detection, of the test results indicate that the system is able to detect with the fastest time with a time of 0.5 seconds.



Picture. 3. The position of the Object in an oblique

2. The position of the Object in a State far

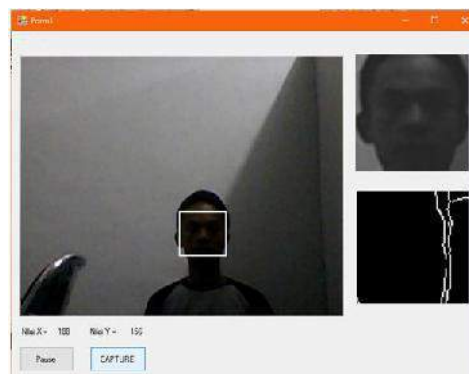
This test is done to find out the influence of the position and distance of the face towards the accuracy and speed of detection, of the test results indicate that the system is able to detect with the fastest time with a time of 0.8 seconds



Picture 4. The position of the Object in a State far

3. The intensity of the Lighting

This test is done to find out the extent of the impact insitas the light that can be detected, the results of the experiment showed that the system was able to detect in the dark state that come with the value with the value of the mean ± 50 to ± 200 , maximum value mean for maximum light, lighting should be evenly on the face.



Picture 5. The intensity of the Lighting

4. RESULT

From the results of the process of detection will be obtained a number of featured face that has been detected by the system, the data will be the face of the record, can then be used as the data can be processed further for other purposes such as the investigation of a case and others.



Picture 6. Result of face detection system

5. CONCLUSION

1. In the system is the number of objects not affects against system performance in the face of the object detected.
2. The detection system is influenced by the intensity of the light in the room
3. The system may detect in lighting are not stable with mean value ± 50 to ± 200 for dark and light value

REFERENCES

- [1] Dalal, N. Triggs, B, 2005. Histogram of oriented gradients for human detection in IEEE computer Societe Conference on Computer Vision and Pattern Recognition(CVPR'2005), San Diego, CA. N..
- [2] Suryadi, S. Dkk. "Human Detection Menggunakan Metode Histogram Of Oriented Gradients (Hog) Berbasis Open_Cv". Journal, Journal Unesa.
- [3] Kurniawan. A, 2016. "*Analisis Sistem Pendeteksian Wajah Secara Real Time Dengan Menggunakan Metode Viola Jones*". Bandar Lampung : Universitas Bandar Lampung.



universitas bandar lampung

SOLUTION FOR PRESENT AND FUTURE



9 772339 165002

Bandar Lampung University
Zainal Abidin Pagar Alam Street No. 26 Labuhan Ratu
Bandar Lampung, Indonesia | www.ubl.ac.id | Phone +62 721 773 847