

## International Conference on Engineering and Technology Development



# 3<sup>rd</sup> ICETD 2014

28, 29 October 2014, Bandar Lampung, Indonesia

Hosted By :  
Faculty of Engineering and Faculty of Computer Science  
Bandar Lampung University, Indonesia



In cooperation  
with :



THE UNIVERSITY OF KITAKYUSHU



الجامعة الإسلامية العالمية  
INTERNATIONAL ISLAMIC UNIVERSITY MALAYSIA  
بوترا برني

# 3<sup>rd</sup> ICETD 2014

THE THIRD INTERNATIONAL CONFERENCE  
ON ENGINEERING AND TECHNOLOGY DEVELOPMENT

28 -29 October 2014  
Bandar Lampung University (UBL)  
Lampung, Indonesia

## PROCEEDINGS

Organized by:



Faculty of Computer Science and Faculty of Engineering  
Bandar Lampung University (UBL)  
Jl. Zainal Abidin Pagar Alam No.26 Labuhan Ratu, Bandar Lampung, Indonesia  
Phone: +62 721 36 666 25, Fax: +62 721 701 467  
website : [www.ubl.ac.id](http://www.ubl.ac.id)

## **PREFACE**

The Activities of the International Conference is in line and very appropriate with the vision and mission of Bandar Lampung University (UBL) to promote training and education as well as research in these areas.

On behalf of the Second International Conference on Engineering and Technology Development ( 3<sup>rd</sup> ICETD 2014) organizing committee, we are very pleased with the very good response especially from the keynote speaker and from the participants. It is noteworthy to point out that about 80 technical papers were received for this conference.

The participants of the conference come from many well known universities, among others : University Kebangsaan Malaysia – Malaysia, IEEE – Indonesia, Institut Teknologi sepuluh November – Indonesia, Surya Institute – Indonesia, International Islamic University – Malaysia, STMIK Mitra Lampung – Lampung, Bandung Institut of Technology – Bandung, Lecture of The Malahayati University, B2TP – BPPT Researcher – Lampung, University of Kitakyushu – Japan, Gadjah Mada University – Indonesia, Universitas Malahayati – Lampung, Lampung University – Lampung,

I would like to express my deepest gratitude to the International Advisory Board members, sponsor and also to all keynote speakers and all participants. I am also grateful to all organizing committee and all of the reviewers who contribute to the high standard of the conference. Also I would like to express my deepest gratitude to the Rector of Bandar Lampung University (UBL) who give us endless support to these activities, so that the conference can be administrated on time

Bandar Lampung, 22 October 2014

Mustofa Usman, Ph.D  
3<sup>rd</sup> ICETD Chairman

# PROCEEDINGS

## 3rd ICETD 2014

The Third International Conference  
On Engineering And Technology Development

28 -29 October2014

### INTERNATIONAL ADVISORY BOARD

Y. M Barusman, Indonesia

Ahmad F. Ismail, Malaysia

Mustofa Usman, Indonesia

Moses L. Singgih, Indonesia

Andreas Dress, Germany

Faiz A.M Elfaki, Malaysia

Warsono, Indonesia

Raihan Othman, Malaysia

Zeng Bing Zen, China

Tjin Swee Chuan, Singapore

Khomsahrial R, Indonesia

Rony Purba, Indonesia

Hon Wei Leong, Singapore

Imad Khamis, USA

Rozlan Alias, Malaysia

Rudi Irawan, Indonesia

Gusri Ibrahim, Indonesia

Jamal I Daoud, Malaysia

Riza Muhida, Indonesia

Heri Riyanto, Indonesia

Agus Wahyudi, Indonesia

# PROCEEDINGS

## 3<sup>rd</sup> ICETD 2014

The Third International Conference  
On Engineering And Technology Development

28 -29 October 2014

### STEERING COMMITTEE

#### Executive Advisors

Dr. M. Yusuf S. Barusman  
Andala R. P. Barusman, MA.Ec

#### Chairman

Mustofa Usman, Ph.D

#### Co-Chairman

Dr. Ir. Hery Riyanto, MT  
Ahmad Cucus, S.Kom., M.Kom

#### Secretary

Yuthsi Aprilinda S.Kom., M.Kom  
Marzuki, S.Kom., M.Kom  
Maria Shusanti Febrianti, S.Kom., M.Kom

#### Technical Committee

Robby Yuli Endra, S.Kom., M.Kom  
Sofiah Islamiah, ST, MT  
Fenty Ariani, S.Kom., M.Kom  
Taqwan Thamrin, ST., MSc  
Dina Ika Wahyuningsih, S.Kom  
Agus Sukoco, M.Kom  
Hj. Susilowati, ST, MT  
Haris Murwadi, ST, MT

#### Treasure

Samsul Bahri, SE  
Dian Agustina, SE

# PROCEEDINGS

## 3<sup>rd</sup> ICETD 2014

The Third International Conference  
On Engineering And Technology Development

28 -29 October 2014

### ORGANIZING COMMITTEE

#### Chair Person

Dr. Ir. Hery Riyanto, MT

#### Vice Chair Person

Ahmad Cucus, S.Kom., M.Kom

#### Treasure

Dian Agustina, S.E

#### Secretary

Robby Yuli Endra, S.Kom., M.Kom

Sofia Islamiah Izhar, S.T., M.T.

Taqwan Thamrin, ST., MSc

Erlangga, S.Kom., M.Kom

Iwan Purwanto S.Kom., MTI

#### Special Events

Agus Sukoco, M.Kom

Dra. Yulfriwini, M.T.

Ir. Juniardi, MT

Ir. Indra Surya, MT

Ir. Najamudin, MT

Kunarto, ST. MT

IB. Ilham Malik, ST. MT

Ir.A Ikhsan Karim, MT

Usman Rizal, ST., M.MSi

Ir. Sugito, MT

Berry Salatar, S.Pd

Ayu Kartika Puspa S.Kom., MTI.

Helta Anggia S.Pd., MA

Yanuaris Yanu Darmawan SS. M.Hum

#### Receptionist

Indyah Kumoro K.W., S.T., IAI.

Haris Murwadi, S.T., M.T.

**Transportation and Acomodation**

Irawati, SE  
Desi Puspita Sari, S.E  
Ifa Ditta, S.E., S.T.P  
Riffandi Ritonga, S.H.

**Publication and Documentation**

Ir. Indriati Agustina Gultom, M.M  
Noning Verawati, S.Sos  
Hesti, S.H  
Masitoh S.Sos

**Consumption**

Susilowati, S.T., M.T  
Yuthsi Aprilinda S.Kom., M.Kom  
Maria Shusanti Febrianti, S.Kom., M.Kom  
Fenty Ariani, S.Kom., M.Kom  
Reni Nursyanti, S.Kom., M.Kom  
Sundari, S.Kom

**Facility and Decoration**

Siti Rahma Wati, S.E.  
Dina Ika Wahyuningsih, S.Kom.  
Arnes Yuli Vandika, S.Kom, M.Kom.  
Zainal Abidin, S.E.  
Ahyar Saleh, S.E.  
Eko Suhardiyanto  
Wagino  
Sugimin

## Table Of Content

No	Title	Author	Page
1	The Influence Of Implementing Information Technology On Knowledge Management Toward Performance Evaluation Using Balanced Scorecard	Sarjito Surya	1-3
2	Implementation Of Customer Relationship Management (Crm) To Automate Logging Track Record Students And Alumni	Robby Yuli Endra <sup>#1</sup> Fenti Aryani <sup>*2</sup> Septiany Dian Puspita <sup>#3</sup> Ade Kurniawan <sup>*4</sup>	4-10
3	Prototype Model Classification System Level Internal Audit Findings Based On Case-Based Reasoning In Education Quality Management	Marzuki <sup>#1</sup> Maria Shusanti Febrianti <sup>*2</sup>	11-13
4	Implementation Case Based Reasoning In Determining The Rational Prescription Of Tb Drugs	Ahmad Cucus	14-19
5	Implementation Of Workflow Management System On E-Learning Platform For The Effectiveness Of Distance Learning	Yuthsi Aprilinda <sup>#1</sup> Agus Sukoco <sup>*2</sup> Ahmad Cucus <sup>#3</sup>	20-25
6	Thermal Bioclimate For Tourism: Case Study Of Kuta, Bali Province, Indonesia	Nyoman Sugiarta <sup>#1</sup> Andreas Matzarakis <sup>#2</sup>	26-32
7	Minimum System Design Of Android Based Pstn Phone	Deo Kiatama <sup>#1</sup> Fransiscus Ati Halim <sup>*2</sup> Arnold Aribowo <sup>#3</sup>	33-38
8	The Design Of Pressing Equipment For Banana Fruit	M.C. Tri Atmodjo	39-44
9	Modelling Supply Chain Management In B2b E-Commerce Systems	Idris Asmuni	45-51
10	Extreme Programming Study Method Case Study On Designing Of Accounting Term Dictionary	Usman Ependi <sup>#1</sup> Qoriani Widayati <sup>*2</sup>	52-55
11	Review On Economic Valuation Of Solid Waste Management In Bandar Lampung, Lampung	ling Lukman <sup>#1</sup> , Diah Ayu Wulandari Sulistyaningrum <sup>*2</sup> , Taqwan Thamrin <sup>#3</sup>	56-57



No	Title	Author	Page
12	Prototype Topology Sdn For Simple Network Campus	Arnesyulivandika	58-61
13	Tsunami Force On A Building With Sea Wall	Any Nurhasanah <sup>#1</sup> Nizam <sup>*2</sup> Radianta Triatmadja <sup>#3</sup>	62-64
14	Analysis The Quality Of Website Service Information System Academic Integrated ( Siater ) Bandar Lampung University Using Pieces Methods	Yusinta Ria Disanda	65-71
15	Organize Bad Manual Financial Database Of Educational Organization By Bank To Decrease Financial Criminalize	Ruri Koesliandana <sup>#1</sup> Eka Imama Novita Sari <sup>*2</sup> Arnes Yuli Vandika <sup>#3</sup>	72-74
16	Design Of Lampung Bay Waterfront Using Poetic Architecture Approach	Shofia Islamia Ishar, S.T.,M.T. Muhammad Syahroni, S.T.	75-83
17	Analysis Limiting Internet Sites With The Method Using Squid Proxy Server At Smkn 1 South Rawajitu	Reni Tri Astuti	83-88
18	Effect Of Grading On Differences Using Mixed Concrete Aggregate Rough And Fine Aggregate Concrete Compressive Strength Of Natural	Yulfriwini	89-97
19	Analysis Quality Dino Tour Travel Management Website Using Webqual 4.0	Rola Hengki	98-105
20	Holonic Manufacturing System: Current Development And Future Applications	Moses Laksono Singgih	106-113
21	An Analysis Perspective Implemented Text Mining Analytics Information Extraction For Impact Of Indonesian Social Media	Agus Suryana.Mti <sup>#1</sup> Sri Ipnuwati.M.Kom <sup>*2</sup>	114-123
22	Study Of Gold Mine Tailings Utilization As Fine Aggregate Material For Producing Shotcrete Based On Concept Of Green Technology	Lilies Widodojoko <sup>1)</sup> Harianto Hardjasaputra <sup>2)</sup> Susilowati <sup>3)</sup>	124-133

No	Title	Author	Page
23	Decision Support System For Determined Recommendations Lecturer Teaching Handbook Using Fuzzy	Usman Rizal <sup>#1</sup> Fenti Aryani <sup>*2</sup>	134-140
24	The Expert System Software Application On Lecture Scheduling Based On Rule Based Reasoning	Taqwan Thamrin <sup>#1</sup> Ahmad Cucus <sup>*2</sup> Adi Wijaya <sup>#3</sup>	141-144
25	Portal Website Analysis Using Iso / Iec 9126-4 Metric Effectiveness (Case Study Indonesia Wi-Fi Portal Website)	Refky Jumrotuhuda	145-149
26	Student Satisfaction Analysis Of Siater Using End User Computing Satisfaction (Eucs)	Erlangga, Jefri Krisna Putra	150-155
27	Urban Tourism Development Through Low Impact Development (Lid) Towards Green-Tourism	*Iir. Wiwik Setyaningsih, Mt *Ztri Yuni Iswati, St., Mt, *Zsri Yuliani, St., M.App.Sc.	156-161
28	Hawkers Empowerment Strategy To Promote Sustainable Economy In Surakarta	Murtantjanirahayu Rufiaandisetyanaputri	162-172
29	New Urbanism: A Comparative Analysis Between Traditional Village And Housing Estate	Bhakti Alamsyah	173-179
30	Traditional Market Revitalization As An Urban Catalyst In The City Of Surakarta	Istijabatul Aliyah #1, Bambang Setioko #2, Wisnu Pradoto #3	180-188
31	The Robinson Mall Impact On Fv And Ds In Zapa Street, Bandar Lampung City	Ida Bagus Ilham Malik Ilyas Sadad	189-195
32	Decision Support System For Mall Nutrition Using Simple Additive Weighting (Saw) Method	Reni Nursyanti Mujasih	196-200
33	Effect Of Cement Composition In Lampung On Concrete Strength	Heri Riyanto	201 – 204

<b>No</b>	<b>Title</b>	<b>Author</b>	<b>Page</b>
<b>34</b>	E-Archive digital storage media	Arnes yuli vandika, ade kurniawan, ari kurniawan	205 -207
<b>35</b>	Virtualization Technology for Optimizing Server Resource Usage	Edwar Ali, Didik Sudyana	208 – 212
<b>36</b>	Decision Support System (DSS) For The Determination Of Percentage Of Scholarship Quantity Based Fuzzy Tahani	Robby Yuli Endra #1, Agus Sukoco #2	213 -223
<b>37</b>	Evaluation of Pedestrian Way's Comfort Case Study: Jl. Z. A. Pagar Alam, Bandar Lampung	Haris Murwadi 1*, Fritz Akhmad Nuzir 2	224 - 228
<b>38</b>	Modification Effect Of Volume Cylinder Four Stroke Engine To Effective Power	Ir. Najamudin, MT	229-239
<b>39</b>	Impact Of Motor Vehicle Emissions On Air Quality In Urban And Sub Urban Area ( Case Study: Bandarlampung City)	Ir. A. Ikhsan Karim, MT., Ir. Sugito, MT	240-249

# The Expert System Software application on Lecture Scheduling based on Rule Based Reasoning

Taqwan Thamrin<sup>#1</sup>, Ahmad Cucus<sup>\*2</sup>, Adi Wijaya<sup>#3</sup>

<sup>#</sup>Faculty of Computer Science, Bandar Lampung University

<sup>#1</sup>Programme Study Information System, <sup>\*2</sup>Programme Study Informatic Engineering

<sup>1</sup>taqwanthamrin@ubl.ac.id

<sup>2</sup>Ahmadcucus@gmail.com

**Abstract**— Method of Rule-Based Reasoning is one of the methods in decision support systems that may have had knowledge base. In this method of solving problems based on an artificial intelligence approach using problem-solving techniques based on the rules contained in the knowledge base that can solve the problem sequentially. With the approach, some rules that have been produced can be re-examined by an expert to be able to be repaired or modified to obtain better results. In addition, this method is also used when needed explanation of traces (steps) in getting an achievement of a solution. Research done is to build a knowledge base representation system using Rule-Based Reasoning. Implementation of the system was built using a desktop-based application.

**Keywords**— Rule-Based Reasoning, Decision Support Systems, Knowledge Base, Artificial Intelligence

## I. INTRODUCTION

Lecture Scheduling in a college is a routine work done each face of the new semester. In practice, it is often the schedule that has been issued is uncertain that requires rescheduling. This resulted in the beginning of the semester lectures are not effective because they have to make adjustments to the schedule with the actual situation after the schedule is issued. In addition, the difficulty in finding an empty time slot has also become an obstacle especially when looking for a replacement class schedules or additional courses.

In preparing the schedule is not easy [6]. There are several aspects that affect the preparation of class schedules such as faculty, students, courses, lecture rooms, and a time slot. Each of these aspects has a state that can be a problem and the conflict in the preparation of class schedules. For example, the problems facing the lecturer is a conflict of aspects of lecturers is a professor scheduled to teach at two different locations at one time. Or from the aspect of students, the problem is the amount of class perangkatannya. In addition to these problems, there are many more possible issues that can arise from each of these aspects.

To overcome these problems can be done in a way to build a computerized decision support system. The system will accept all of these issues as a matter of scheduling solutions are structured to produce a good . Structured problem is a problem that it is possible to use the algorithm or rules of the

decision so that problems can be identified or understood. With the use of algorithms or rules, it is also possible to identify a replacement solution and evaluate it, and determine the best solution.

A decision support system requires a model of the completion of the problems encountered. To be able to determine the right model can be done by identifying the problem and analyze environmental problems and identify the variables involved in the decision making. Complex problems can be seen from every aspect in the preparation of class schedules that are interconnected with other aspects. Then the scheduling is done according to the rules - certain rules. So that the appropriate model for this system is the method of Rule-Based Reasoning.

## II. PROBLEM STATEMENT

Based on the above Introduction, the identification of problems that arise in this study are:

- a. The difficulty of schedule
- b. Frequent clashes course schedule
- c. Frequent occurrence of rearrangements class schedule

## III. THE PURPOSES

The Purpose Of This Study is to Make An Expert System Which Can Facilitate The Preparation Of Class Schedules And Avoidance Of Conflicting Class Schedules So As To Avoid Rescheduling.

## IV. RELATED RESEARCH

[3] Applying expert systems to solve problems and make decisions within the scope of the economy. This study uses a pattern-based if-then rules in performing the method of approach to the knowledge base. In these studies have analyzed how aspects of the advantages of using an expert system for decision-making process. In this research it has been discovered that intelligent systems have the performance to do some of the fastest evaluation in taking to calculate the uncertainty on the true state by using fuzzy logic.

[10] Applying a forward chaining on the scheduling of courses, the process is done by tracking ahead of the main components of the scheduling in step by step in processing the information and use of constraint satisfaction problems which

utilizes some rules that exist in scheduling courses. It can set the working time, so we get the effective working time and organized in accordance with the plan. Forward chaining method can be applied to the information system scheduling with setup 6 major components (data lecturer, the data subject, the data Prodi, the data space, and time data) and the process of classes are offered, and the generated space, schedule messages by faculty, and generate schedules resulting matrix scheduling lectures.

[12] Applying the method of Genetic Algorithm in scheduling activities in the Public Relations of Ministry of Religious Affairs to produce a schedule of activities that do not clash. In the application of Genetic algorithm is a method using six main components: Encryption Techniques, Initialization Procedure, Function Evaluation, Selection, Genetic Operators and Parameters Determination. While the operator described Genetics back to 3 operators: Selection, Crossover, and Mutation. through components - components and stage - the stage of the genetic algorithm, generates the optimal schedule of activities and not clash.

[11] Applying an expert system which can diagnose plant pests and diseases of onion and chili using forward chaining inference technique and a rule-based approach (rule base reasoning). By using forward chaining data is used to obtain a conclusion has been obtained from an expert knowledge and other literature such as journals, articles and books, by matching the various rule premise matching, matching is done by a variety of symptoms that occur in two types of horticultural crops is contained in the knowledge base. Rule-based approaches (rule base reasoning) in this study is used as a form of approach to the classification of the data obtained in the knowledge base in order to facilitate the transformation process of the inference engine. By using the if-then pattern then an expert can also easily modify the data contained in the knowledge base.

## V. RESEARCH METHODOLOGY

The design and implementation of the Lecture Scheduling System Lecture held at the Faculty of Computer Science, University of Bandar Lampung using a rule-based approach (rule-based reasoning) is an approach using the IF-THEN rules.

Analysis and design of Class Lecture Scheduling System is done through the phases of the System Development Life Cycle, which consists overcome six phases, namely: (1) preliminary investigation, (2) systems analysis, (3) system design, (4) the development of the system, (5) system implementation, and (6) treatment systems. Based on these phases, formulate the framework (frame work) as a guide for design. The framework is shown in Figure 1.

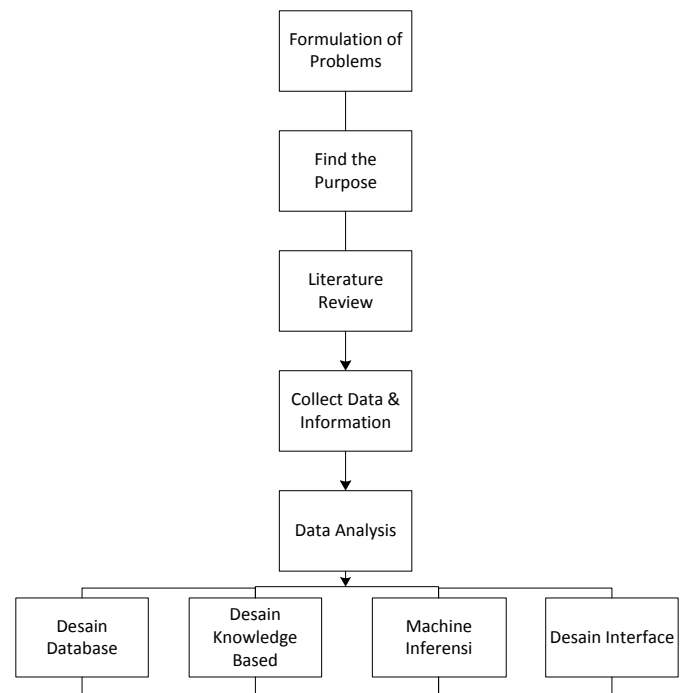


Fig. 1 Lecture Scheduling Expert System Development

## VI. ANALYSIS & DISCUSSION

### A. Rule Based Reasoning Application

To facilitate the application of the rule based reasoning into this course scheduling system, the required variables that will be created to facilitate the application of coding and analyzing the data. The variables involved are as follows:

#### 1) Variables

In these research there are a lot of variables such as; Subjects, Lecturer, Prodi, Credits, Amount of Students, Class, Day, Time, Type of Lecture, Semester and Classroom.

#### 2) Coding

Table 1 Class

Code	Name of Class
R1	E.2.4
R2	E.2.3
R3	E.2.2
R4	E.3.1
R5	Lab. Computer

#### 3) The Day

Table 2 code of the day

Kode	Name of the Day
H1	Monday
H2	Tuesday
H3	Wednesday
H4	Thursday
H5	Friday
H6	Saturday

4) Time

Table 3 Code of Time

Code	Time
P1	08-00 - 09.45
P2	10.00 - 11.45
P3	12.30 - 14.15
P4	14.30 - 16.15
P5	16.30 - 18.15

B. Rules Class Lecture Scheduling

There are some rules such as:

1. If a space has been filled at the same time, the space can not be replenished.
2. If the type of is the practicum must be in the Lab space. computer
3. If the type of is the theory of the space can be in E.2.4, E.2.3, E.2.2 or E.3.1
4. If the faculty has been teaching in the same day and at the lecturer can not teach in two different rooms.
5. The number of students should not exceed the capacity of the room.
6. If the faculty do demand schedule, the lecturer will take precedence.

C. Process Flow Lecture Scheduling based on Rule Based Reasoning

Example 2:

Code of Data : KD001  
 Code of Course: KI3120  
 Courses : Multimedia & Animasi  
 Lecturer :Tyas Sukmana, S.Kom,  
 Prodi : Informatic Engineering  
 Type of Lecture:Praktikum  
 Amount : 33  
 Credit : 3

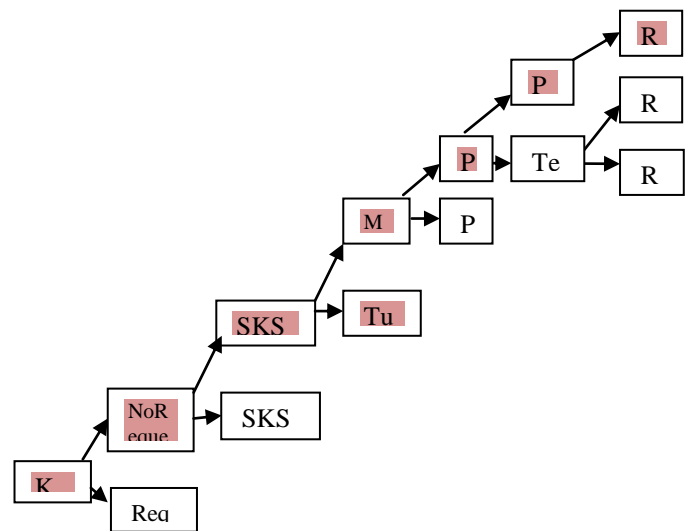


Fig 2. Rulebased Flow SKS>2

Example 2:

Code of Data : KD002  
 Code of Course: KS3413  
 Courses : TATA KELOLA & AUDIT SI  
 Lecturer :AYU KARTIKA PUSPA, S.Kom,M.TI.  
 Prodi : Teknik Informatika  
 Type of Lecture: Sistem Informasi  
 Amount : 25  
 Credit : 2

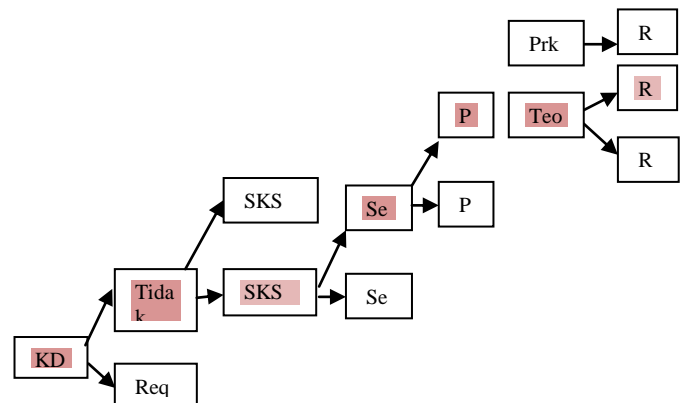


Fig 3. Rule Based Flow SKS<3

VII. CONCLUSIONS & FUTURE WORK

Based on the results of research and discussion, which is done from design to testing of the system information, the conclusions that can be drawn from this study are as follows:

- a. From the analysis and design of The Expert System software has been successfully created Class-Based Lecture Scheduling System Based Rule Based Reasoning To Simplify Lecture Scheduling Lecture, with the stages of planning, analysis, design, implementation and testing. This provides a system built to present information to the Faculty Lecture Schedule for Students and Lecturers

b. Lecture Scheduling The Expert System software Class-Based Expert System Rule Based Reasoning To Simplify Lecture Scheduling This lecture has to be used to reschedule . Because of the assay to obtain outcomes more optimal scheduling, efficient and easier through the measurement process blackbox and whitebox who said that when the application is run, it is seen that the node has been executed once. Based on these provisions in terms of the feasibility of the software, this system has been qualified so as to reduce schedule conflicts that often occur. This information system is able to manage the data subjects that have enter into an optimal schedule.

For the future work; a. Class Lecture Scheduling System can be used as a complementary tool in the preparation of the schedule needs enrolled in the Faculty of Computer Science University of Bandar Lampung.

b. For further research in order to increase the functionality of a Class Lecture Scheduling System Based Rule Based Reasoning this.

#### REFERENCES

- [1] Buliali, . JL, Herumurti,,D, Wiriapraja, .G. 2008. "Penjadwalan mata kuliah dngan menggunakan algoritma genetika dan constraint satisfaction". Jurnal Teknik Industri, Surabaya.
- [2] Durkin, J. 1994. *Expert Design and Development*. London: Prentice Hall International edition, Inc.
- [3] Fernandes, .A, Handoyo, E, Somantri,,M. 2008 . "Pembangunan aplikasi penyusunan mata kuliah dengan algoritma semut".Jurnal Teknik Elektro: Semarang.
- [4] Kursini. 2006. *Sistem Pakar Teori dan Aplikasi*. Yogyakarta: Penerbit Andi Yogyakarta.
- [5] Kusumadewi, S. 2003. *Artificial Intelegence*. Yogyakarta: Penerbit Graha Ilmu.
- [6] Mariana. Hiryanto, L. 2010. Penjadwalan Kelas Matakuliah Menggunakan Vertex Graph Coloring dan Simulated Annealing. Jurnal: Jakarta.
- [7] Putra, B., Jaya, B., Sisca, O. Dan Gusti Ahta, V. 2012. Penerapan Algoritma Genetika untuk Penjadwalan Kegiatan Perkuliahan Semester Ganjil Kurikulum 2012 di Jurusan Matematika FMIPA Unsri. Jurnal: Universitas Sriwijaya.
- [8] Sam'ani. 2012. Rancang Bangun Sistem Penjadwalan Perkuliahan dan Ujian Akhir Semester dengan Pendekatan Algoritma Genetika. Tesis: Semarang.
- [9] Setiadi, Robert. (2001). Pemecahan Masalah Penjadwalan Kuliah dengan Menggunakan Teknik Intelligent Search.
- [10] Susanto, Y. 2008. *Aplikasi Sistem Pakar untuk Mendiagnosis Penyakit Pencernaan pada Manusia*. Jakarta: Universitas Pembangunan Nasional "Veteran" Jakarta.
- [11] Wiro, G. 2010. Aplikasi Sistem Pakar untuk Simulasi Diagnosa Hama dan Penyakit Tanaman Bawang Merah dan Cabai menggunakan Forward Chaining dan Pendekatan Berbasis aturan.
- [12] Ulisna Ade, R. 2011. Pengembangan Aplikasi Penjadwalan Kegiatan dengan Menggunakan Algoritma Genetika. Skripsi Sistem Informasi: Jakarta

# PROCEEDINGS

3<sup>rd</sup> ICETD 2014



Hosted By :  
Faculty of Engineering and Faculty of Computer Science  
Bandar Lampung University, Indonesia